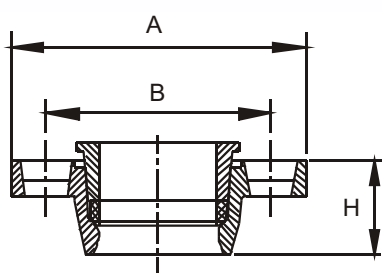


**LOCKED FLANGE ADAPTOR**

**COUPLING & FLANGE ADAPTOR**



**DESCRIPTION**

- Blue epoxy anti-corrosion surface coating
- Nominal pressure: 16 Bars
- Compliant to EN545 standard
- Suitable for PE pipes
- ISO PN10 and PN16 drilled flanges until DN150, from DN200, ISO PN10 or PN16 drilling, to be specified
- A.C.S certified product



Ref	DN	DE	A (mm)	B (mm)	H (mm)	Weight
BB1001	50	63	165	125	55	2,40 kg
BB1002	60	63	185	140	55	2,60 kg
BB1003	65	75	185	140	60	2,80 kg
BB1004	80	90	200	160	65	3,40 kg
BB1005	100	110	220	180	70	4,10 kg
BB1006	125	125	250	210	75	5,00 kg
BB1007	125	140	250	210	75	5,90 kg
BB1008	150	160	285	240	80	7,00 kg
BB1009	200	200	340	295	90	10,10 kg
BB1010	200	225	340	295	90	12,10 kg
BB1011	250	250	400	355	95	13,70 kg
BB1012	300	315	460	410	98	17,40 kg
BB1013	350	355	520	478	114	22,00 kg
BB1014	400	400	580	535	128	26,50 kg
BB1015	500	500	620	575	135	40,00 kg